

747Pro GPS Trip Recorder

User's Manual



Table of Contents

Chapter 1 Before you begin	4
1.1 Note and Warning	4
1.2 Introduction	5
1.3 Features	5
1.4 Applications	5
1.5 Appearance	6
1.6 Power Switch and Push Button	7
1.7 LED Display	8
1.8 Buzzer Alarm	9
1.9 Vibration sensor for Smart Log	9
Chapter 2 Getting Started	10
2.1 Checking the package content	10
2.2 Getting Started	11
2.3 Helpful Tips	16
Chapter 3 How to configure your GPS Record?	17
3.1 Driver Installation	17
3.2 GpsView software	17
3.2.1 Connect USB cable between GPS and laptop	17
3.2.2 Executing GpsView Program	18
3.2.3 Download AGPS	19
Chapter 4 Using Photo Tagger software	22
4.1 Execute and install software utility Photo Tagger	22
4.2 Google Earth	22
4.3 Software Utility --- GPS Photo Tagger	22
Appendix	23

Appendix A. Specifications	23
Appendix B. loqr GPS Photo	26
Appendix C. Certification.....	27
Appendix D. Warranty Information.....	29

Chapter 1 Before you begin

1.1 Note and Warning

- 747Pro uses + Lithium-Ion battery. If 747Pro is used in temperature lower than -10 C° or higher than 60 C° , its battery charging capability will decrease. Please leave the 747Pro far from heat or high temperature environment. In addition, do not expose your 747Pro in temperature higher than $140\text{ F}^{\circ}/60\text{ C}^{\circ}$. If you do not follow these rules, the battery inside 747Pro may overheat, explode or burn itself, and this will lead to very serious damage. The + Lithium-Ion battery inside the 747Pro should be recycled.
- While in the hospital, turning off the 747Pro is recommended. Wireless GPS receiver may interfere with medical equipments which use radio frequency.
- For a long period not using 747Pro, take out the battery and store it in dry/cool places.
- For safety, keep the 747Pro and all accessories out of children's reach.
- The manufacturer assumes no responsibility for any damages and loss resulting from the use of this manual, or from deletion of data as a result of malfunction, dead battery, or from misuse of the product in any way.
- Use only the supplied and approved accessories. Unauthorized accessories, modifications or attachments could damage the 747Pro, and may violate regulations governing radio devices.
- Use a dry, clean soft cloth to clean the unit. Do not use harsh cleaning solvents, chemicals, or strong detergents.
- Do not attempt to open the 747Pro yourself. Unauthorized hacking may damage the unit, and void your warranty.

1.2 Introduction

This 747Pro logger features an all-in-one, cost-effective portable GPS logging solution. With its on-board memory, it allows you to log your routes by ways of time/ distance/ speed. Points of interest can also be recorded by a push button. With built-in buzzer alarm, 747Pro will beep to let you know GPS location is fixed or a POI is recorded successfully. Through user friendly software utility, it shows your track on Google Earth. This recorder is small and robust, ideal to carry everywhere for applications such as route tracking, mountain climbing or fleet management.

1.3 Features

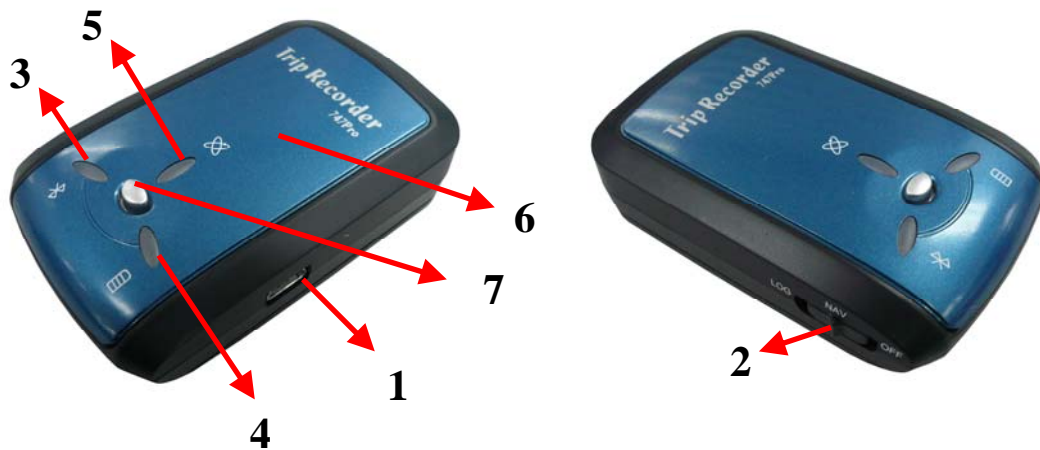
1. ● Dual mode : Data record / Navigation
2. ● Push button for POI recording
3. ● Smart log of time, distance and speed
4. ● Log up to 250,000 waypoints
5. ● High receiving sensitivity
6. ● AGPS available
7. ● Embedded sensor for smart operation
8. ● Fuzzy auto on/off
9. ● Audio alarm
10. ● Rechargeable battery
11. ● Bluetooth V1.2 compliant
12. ● Photo Tagger software

1.4 Applications

- ● Record your travels
- ● Manage trip expense

- ● Represent one's driving behavior
- ● Point of Interest recording
- ● Geo-photo support
- Show on Google Map & Earth

1.5 Appearance



1. DC jack (mini USB type)
2. Mode switch (Power off/ Navigation/ Navigation&log)
3. Bluetooth status LED (blue)
4. Battery status LED (red/green)
5. GPS status LED (orange) / Push to log LED (Red)
6. Internal GPS antenna
7. Push Button

1.6 Power Switch and Push Button

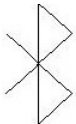

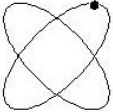
Power Switch	
Right (Off)	Power off
Middle (NAV)	Navigation is enabled.
Left (LOG)	Both Navigation & LOG are enabled.
Push button	
Push	Push button to record POI (Points of Interest), LED will blink 3 times which means the POI is recorded.

Difference between NAV and LOG:

NAV	Working as a Bluetooth GPS receiver.
LOG	Both of navigation and logging functions are enabled.

1.7 LED Display

The 747Pro GPS Trip Recorder has three LED lights, one is Bluetooth Status LED, the 2nd one is Battery Status LED, the 3rd one is GPS Status LED/ Push to log LED. The status table of LED shows as follows:

Category	SYMBOL	COLOR	STATUS	Function
Bluetooth Status LED		Blue	Always on:	Bluetooth on, but not connected to any Bluetooth devices yet
			Slowly blinking:	Sleeping mode (1 time / 5 seconds)
			Quickly blinking:	Bluetooth is connected and ready for data transmission (1 time / 2 seconds)
Battery Status LED		Red	Blinking:	The battery is too low
		Green	Light On:	The battery is charging
		Green	Light Off	The battery is fully charged
GPS Status LED		Orange	Always on:	Acquiring satellites, GPS position not fixed
			Quickly Blinking:	GPS position is fixed, Navigation
		Red	Quickly Blinking:	LED blinks 3 times, Points of Interest is recorded
			Slowly Blinking	The memory space is too low (20% left now), Blink 1 time / 5sec
			Solid on	The memory is full and device stops logging

1.8 Buzzer Alarm

747Pro is equipped with a buzzer and it supports the alarm by sound. 747Pro will beep as an alarm to let you know when the GPS position is fixed, or when you push the POI button or switch to change to log / navigation mode.

	Beep Description
Switch to LOG mode	beep (1 sound)
Switch to NAV mode	beep (1 sound)
POI recorded	beep~beep~beep (continuous 3 sounds)
GPS fix	beep~beep (continuous 2 sounds)

NOTE: When you turn off buzzer by PC software, “Switch” beep alarm still work, only “POI recorded“ and “GPS fix” are disable.

1.9 Vibration sensor for Smart Log

747Pro is equipped with a vibration sensor for smart log function. Which means 747Pro can auto detect if itself is static or dynamic. Through this way, 747Pro will stop logging when it detects it is not moving over 5 minutes. And it will wake up and resume to log automatically when it detects it is moving again.

Chapter 2 Getting Started

2.1 Checking the package content

Congratulations on your purchase of the 747Pro with + Lithium-Ion chargeable battery.

Before you start using 747Pro, please make sure if your package includes the following items.

If any item is damaged or missing, please contact your dealer at once.

- 747Pro GPS Trip Recorder x 1
- USB to mini-USB cable x 1
- DC cigarette lighter adapter x 1
- + Lithium-Ion chargeable battery x 1
- CD Tool x 1 (user manual, software utility, driver)
- Quick start guide x 1

*. Unit package contents may vary depending on countries without prior notice.

*. NOTE: The Cigarette Adapter can only be used to charge 747Pro. Please don't make use of it with devices other than 747Pro.

2.2 Getting Started

Please follow the procedure step by step.

Step 1 Charging Your Battery

To charge your 747Pro, you have to plug your USB cable into the power source. Charging time is about 3~4 hours and you can charge from PC/ Notebook's USB HOST or from cigarette-lighter in car.

For the 1st time you use the 747Pro, please charge battery until it is full. The LED that represents the battery is the right-most battery icon (shown in below).



- If the LED is red, that means battery power is critically low. Charge immediately.
- If the LED is green, that means battery is charging now.
- If no LED light display that means battery is fully charged.

Step 2 Turning on the power switch (NAV/ LOG)



Power off



Navigation



Data record

Difference between NAV and LOG:

NAV	Working as a Bluetooth GPS receiver.
LOG	Both of navigation and logging functions are enabled.

Step 3 Connecting your handheld device with 747Pro

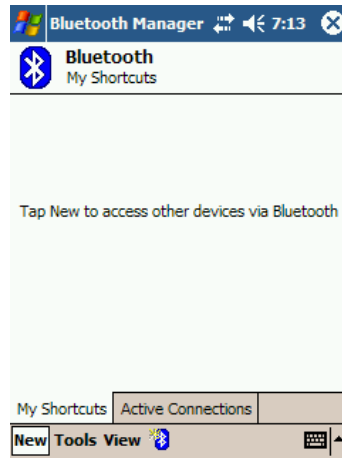
Please refer to the user manual of PDA/Smartphone to enable the Bluetooth connectivity. If the connection between your device and 747Pro is successful, the blue LED of 747Pro will be blinking.

Below, we provide a common procedure of software installation to set up your PDA. (For other PDA/Smartphone, the steps may be different. Bluetooth Manager is a popular program used on Bluetooth device.)



Start -> Bluetooth Manager

-->



New

1. Open “Bluetooth Manager” on your pocket pc, and establish a new connection.



Explore A Bluetooth device ->Next

-->



Tap 747PRO_GPS

2. Explore a Bluetooth device, and find the “747PRO_GPS”



Passkey 0000 (if your PDA asks for the passkey)

3. (Optional)



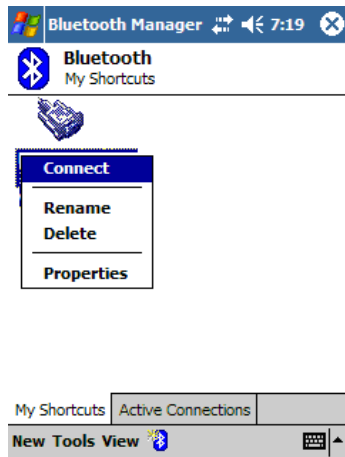
Select SPP slave->Next

-->

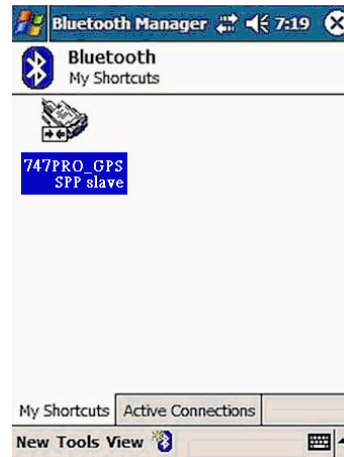


Finish

4. Connect to Serial Port Profile (SPP) Slave



-->



Tap and Hold **747PRO_GPS: SPP** slave, **Connect**

Done

5. Finish Bluetooth Manager Setup

Step 4 Loading your GPS mapping or routing software

You should have mapping software on your PDA/ Smartphone/ laptop or you need to install it before using the 747Pro for navigation.

Step 5 Starting the application

Select the correct COM port & baud rate within the application.

Note: The Bluetooth device in most of the applications has an “auto-detect” feature so that you do not need to select the Baud Rate.

2.3 Helpful Tips

- It's better to turn off the 747Pro when you don't use it, or the serial Flash's life can't last long.
- Some vehicles having heavy metallic sun protecting coating on windshields may affect GPS signal receptions
- Driving in and around high buildings may affect GPS signal receptions.
- Driving in tunnels or indoor park may affect signal receptions.
- In general, any GPS receiver performs best in open space where it can see clean sky. Also weather will affect GPS reception – rain & snow contribute to worse sensitivity.
- Low battery of a PDA/Smartphone or of an 747Pro may affect signal receptions.
- Please check the correct “COM” and “Baudrate” of your PDA.
- 747Pro output data updates every second, therefore the actual position and the position shown in your map may have slight time delay. This may happen when you drive at higher speed or make a turn around a corner.
- Note that 747Pro may not work indoors where it can not see the sky.
- For the 1st time you use the 747Pro, it will take 1 to 3 minutes to obtain the satellite constellation information and fix your position, this is called “Cold Start”. If you replace the battery, 747Pro will do Cold Start again.
- If your 747Pro can't fix your position for more than 20 minutes, we suggest you change to another spot with open space and then try again.

Chapter 3 How to configure your GPS Record?

The GpsView program only supports the Microsoft Windows based platform.

3.1 Driver Installation

Before the USB connector plugs in your PC/ Laptop, please have your USB Driver Installation ready. (Install InstallDriver.exe driver for USB port from CD-ROM.)

3.2 GpsView software

Open the GpsView software, please select correct COM port and Baud Rate (USB / Bluetooth: 115,200bps) to configure GPS.

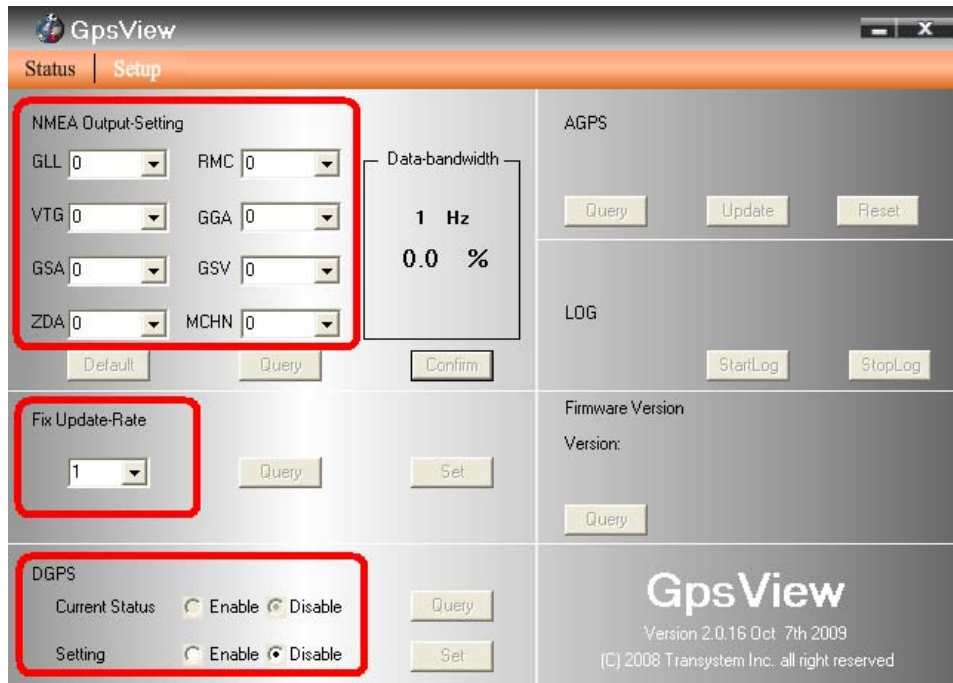
3.2.1 Connect USB cable between GPS and laptop



To USB port on PC/Laptop

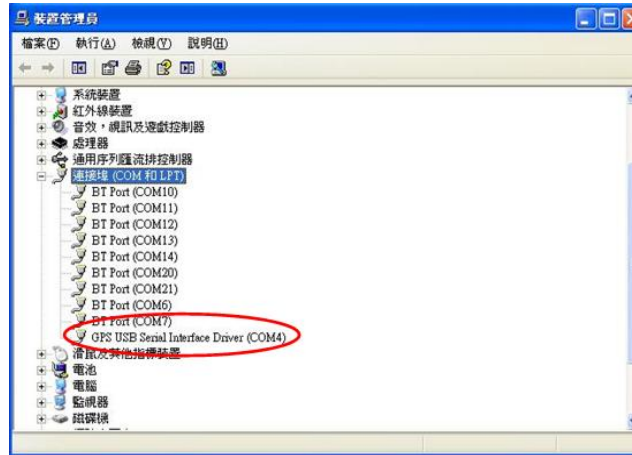
3.2.2 Executing GpsView Program

Click “Command” tap. Update Rate 1 ~ 5Hz is user configurable. And still more options for choice of NMEA output, DGPS...etc. all available through pull-down menus.



3.2.3 Download AGPS

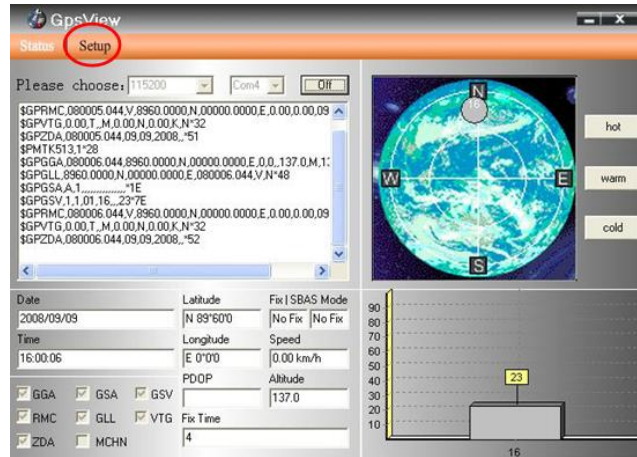
1. Start→Control Panel→System→Hardware→Device Management→Connector (COM and LPT) Check Com port position ◦



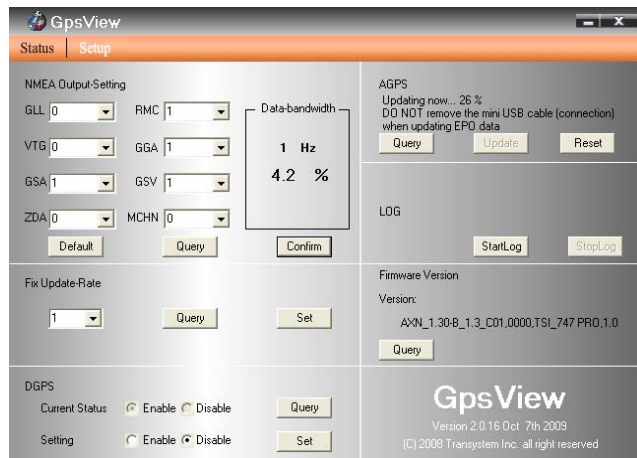
2. Open GpsView.exe→Check Baud Rate and Com port→click On



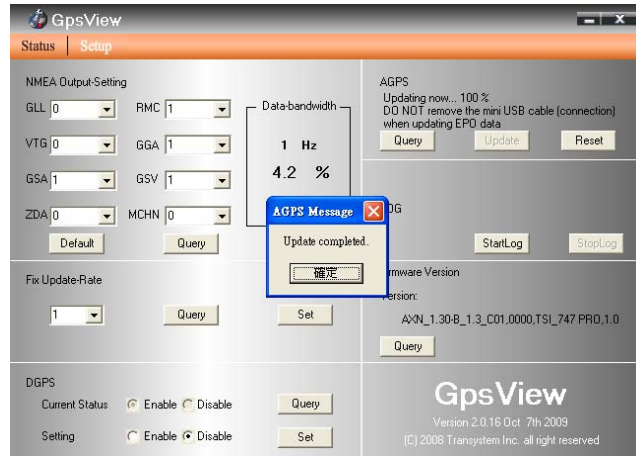
3. Choose Setup



4. Choose Update



5. When Updating now...100%, click Enter complete ◦



NOTE: When you use AGPS function, we suggest use GpsView to download the AGPS data via USB cable.

AGPS has 6 day time limited.

Chapter 4 Using Photo Tagger software

4.1 Execute and install software utility Photo Tagger

Complete GPS Photo Tagger and USB drivers installation (Refer to CD)

4.2 Google Earth

If your computer is not yet installed with Google Earth. Google Earth has a free download version, go download it on the internet first. For more information, please visit <http://earth.google.com/>.

4.3 Software Utility --- GPS Photo Tagger

For further function to use the Photo Tagger software in detail, please refer to the Photo Tagger user manual:

Photo Tagger software > Help > User Manual

To use a mini-USB cable to connect the 747Pro to your PC, you have to power on the 747Pro unit. Please keep in mind to switch to LOG mode while using Photo Tagger software.

Appendix

Appendix A. Specifications

General	
Frequency	L1,1575.42MHZ
C/A Code	1.023MHZ
Datum	WGS84
Performance Characteristics	
Position Accuracy*	Without aid: 3.0m 2D-RMS
	<3m CEP(50%) without SA(horizontal)
	DGPS (WAAS,EGNOS,MSAS):2.5m
Velocity Accuracy*	Without aid: 0.1m/s
	DGPS (WAAS,EGNOS,MSAS):0.05m/s
Acceleration*	Without aid:<4g
	DGPS (WAAS,EGNOS,MSAS):<4g
Timing Accuracy*	50 ns RMS
Reacquisition Time*	<1s
Hot start*	1.5s
Warm start*	34s
Cold start*	35s
AGPS*	<15s
Sensitivity*	Acquisition:-148dBm Max.
	Tracking:-165dBm Max.
Update*	1Hz

Dynamic	
Altitude	Maximum 18,000m
Velocity	Maximum 515m/s
Acceleration	Maximum 4g
Power	
Input Voltage	Vin : 5.0V±5%
Battery	Chargeable + Lithium-Ion battery
Operation time	25 hrs
I/O	
Available Baud Rates	115200 bps
Protocols	NMEA 0183 v3.01
Environment	
Operating Temperature	-10°C ~ +60°C
Storage Temperature	-20°C ~ +80°C
Charging	0°C ~ +45°C
Bluetooth	
Standard	Fully compliant with Bluetooth V1.2
Output Power	0dBm (Typical), Class II
Range	Over 10 meters
Bluetooth Profile	Serial Port Profile (SPP)
Frequency	2.4G ~ 2.4835GHz ISM Band
Security	Yes
USB Bridge	

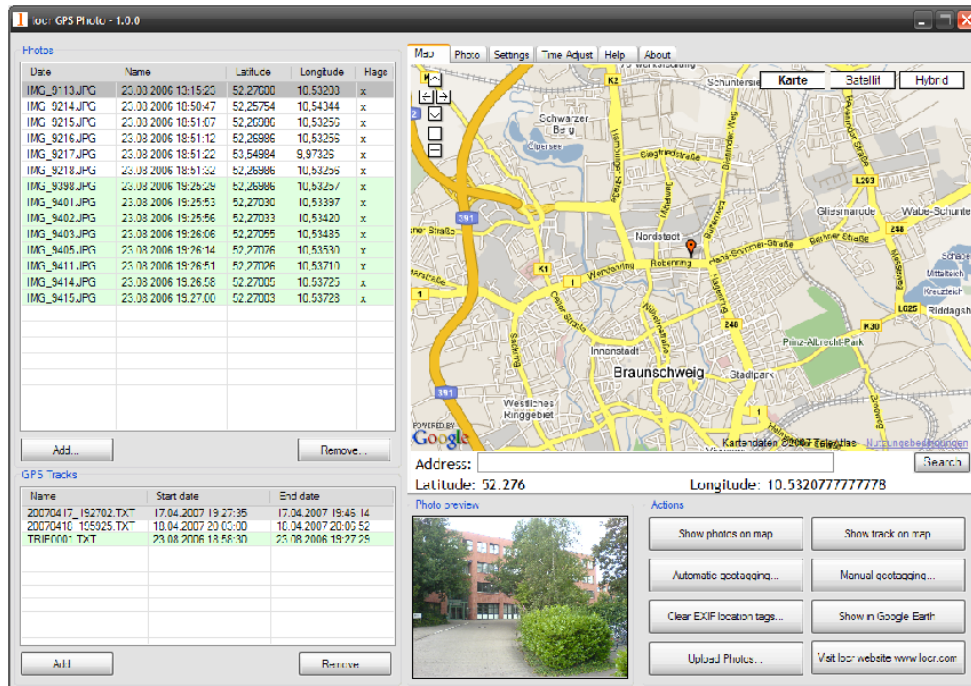
Standard	Fully compliant with USB2.0
Full – speed	12Mbps
Dimension	46.5 x 72.2 x 20 mm
Data Log	
64Mbit	
125,000 way points or more	
Log GPS data by time interval/ distance/ speed limit.	
Log GPS data by button push.	
User can configure settings by using utility.	

*** Citation MTK original chipset spec.**

Appendix B. locr GPS Photo

With 747Pro and locr GPS Photo software, users are allowed to import geotagging adds information to photos. The position (latitude/ longitude) then be written into the EXIF header for the further application. Also, locr GPS Photo can integrated travel log and digital photos by date/ time to show photos on the map directly.

Please find the installation file for Windows XP/ Vista in CD tool, or go to <http://www.locr.com> for further information.



Appendix C. Certification

FCC Notices

This device complies with part 15 of the FCC rules. Operation is subject to the following two conditions:

1. This device may not cause harmful interface, and
2. This device must accept any interference received, including interference that may cause undesired operation.

FCC RF Exposure requirements:

This device and its antenna(s) must not be co-located or operation in conjunction with any other antenna or transmitter.

NOTE: THE MANUFACTURER IS NOT RESPONSIBLE FOR ANY RADIO OR TV INTERFERENCE CAUSED BY UNAUTHOURIZED MODIFICATION TO THIS EQUIPMENT. SUCH MODIFICATIONS COULD VOID THE USER'S AUTHORITY TO OPERATE THE EQUIPMENT.

CE Notices

CE 0984 

Is herewith confirmed to comply with the requirements set out in the Council Directive on the Approximation of the Laws of the Member States relating to Electromagnetic Compatibility (89/336/EEC), Low-voltage Directive (73/23/EEC) and the Amendment Directive (93/68/EEC), the procedures given in European Council Directive 99/5/EC and 89/336/EEC. The equipment was passed. The test was performed according to the following European standards:

- EN 300 328-2 V.1.2.1 (2001-08)
- EN 301 489-1 V.1.4.1 (2002-04) / EN 301 489-17 V.1.2.1 (2002-04)
- EN 50371: 2002
- EN 60950: 2000

Appendix D. Warranty Information

Thank you for your purchase of GPS product from the company.

The company warrants this product to be free from defects in materials and workmanship for one year from the date of purchase. The warranty for accessories is six months. The stamp of distributor or a copy of the original sales receipt is required as the proof of purchase for warranty repairs. The company will, as its sole option, repair or replace any components, which fail in normal use. Such repair or replacement will be made at no charge to the customer for parts or labor. The customer is, however, responsible for any transportation costs.

This warranty does not cover failures due to abuse, misuse, accident or unauthorized alteration of repairs. The company assumes no responsibility about products which have been improperly used, abused, damaged due to accident or natural disaster, or damaged due to unauthorized uninstallation, repair or modification.